

MDS

Primeiro semestre 2016/2017

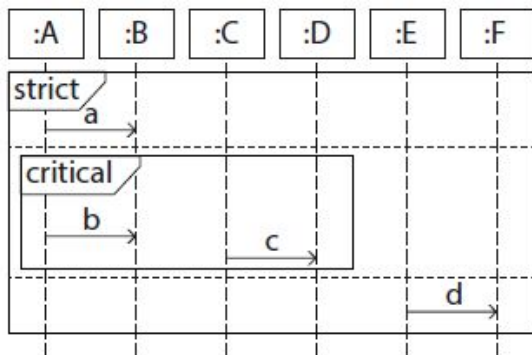
Quiz 4

21/11/2016

(code: 1420)

SOLUTIONS

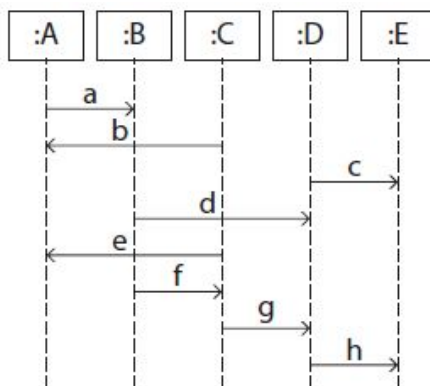
1 - Consider the following Interaction Diagram (Sequence Diagram):



Which of the following message sequences is correct:

- a) $a \rightarrow c \rightarrow b \rightarrow d$
- b) $b \rightarrow c \rightarrow a \rightarrow d$
- c) $d \rightarrow a \rightarrow b \rightarrow c$
- d) $a \rightarrow b \rightarrow d \rightarrow c$
- e) None of the above

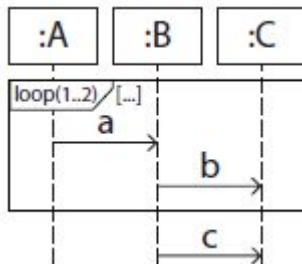
2 - Consider the following Sequence Diagrams:



Which of the following message sequences is incorrect:

- A. $a \rightarrow b \rightarrow c \rightarrow d \rightarrow e \rightarrow f \rightarrow g \rightarrow h$
- B. $c \rightarrow a \rightarrow d \rightarrow b \rightarrow e \rightarrow f \rightarrow g \rightarrow h$
- C. $a \rightarrow b \rightarrow c \rightarrow e \rightarrow d \rightarrow f \rightarrow g \rightarrow h$
- D. $a \rightarrow b \rightarrow c \rightarrow d \rightarrow e \rightarrow f \rightarrow h \rightarrow g$
- E. None of the above

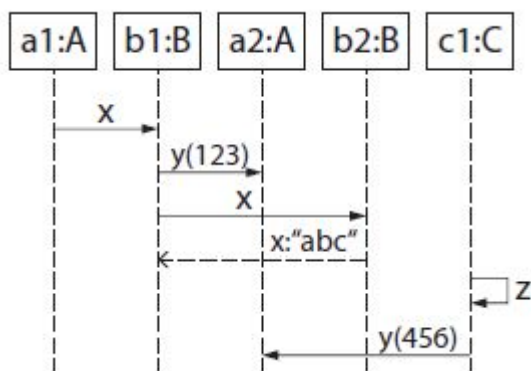
3- consider the following Interaction Diagram (Sequence Diagram):



Which of the following sequences is correct?

- A. $a \rightarrow b \rightarrow c \rightarrow a \rightarrow b$
- B. $a \rightarrow b \rightarrow a \rightarrow b \rightarrow c$
- C. C
- D. $a \rightarrow b \rightarrow c \rightarrow a \rightarrow b \rightarrow c$
- E. None of the above

4- consider the following Interaction Diagram (Sequence Diagram):



Which operation does class C have according to the diagram?

- A. $z():void$
- B. $y(int):void$
- C. $y():void$
- D. $z():int$
- E. $y():int$

MDS

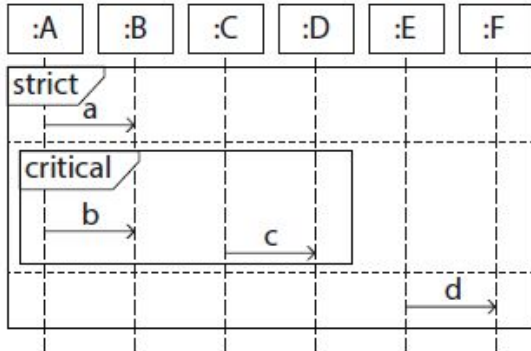
Primeiro semestre 2016/2017

Quiz 4

21/11/2016

(code: 1420)

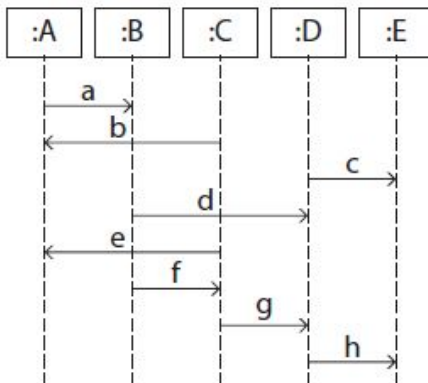
1 - Consider the following Interaction Diagram (Sequence Diagram):



Which of the following message sequences is correct:

- A. $a \rightarrow c \rightarrow b \rightarrow d$
- B. $b \rightarrow c \rightarrow a \rightarrow d$
- C. $d \rightarrow a \rightarrow b \rightarrow c$
- D. $a \rightarrow b \rightarrow d \rightarrow c$
- E. None of the above

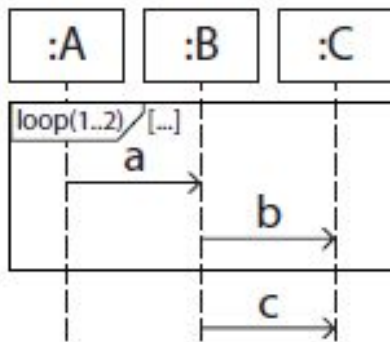
2 - Consider the following Sequence Diagrams:



Which of the following message sequences is incorrect:

- A. $a \rightarrow b \rightarrow c \rightarrow d \rightarrow e \rightarrow f \rightarrow g \rightarrow h$
- B. $c \rightarrow a \rightarrow d \rightarrow b \rightarrow e \rightarrow f \rightarrow g \rightarrow h$
- C. $a \rightarrow b \rightarrow c \rightarrow e \rightarrow d \rightarrow f \rightarrow g \rightarrow h$
- D. $a \rightarrow b \rightarrow c \rightarrow d \rightarrow e \rightarrow f \rightarrow h \rightarrow g$
- E. None of the above

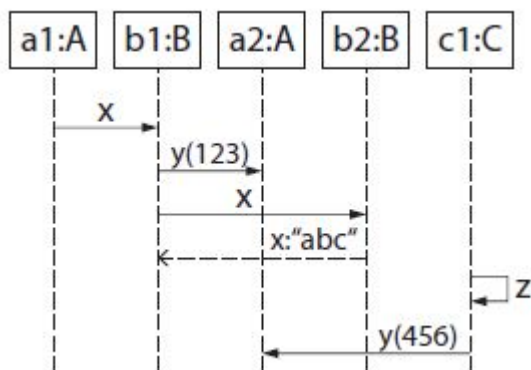
3- consider the following Interaction Diagram (Sequence Diagram):



Which of the following sequences is correct?

- A. $a \rightarrow b \rightarrow c \rightarrow a \rightarrow b$
- B. $a \rightarrow b \rightarrow a \rightarrow b \rightarrow c$
- C. C
- D. $a \rightarrow b \rightarrow c \rightarrow a \rightarrow b \rightarrow c$
- E. None of the above

4- consider the following Interaction Diagram (Sequence Diagram):



Which operation does class C have according to the diagram?(choose the correct one)

- A. `z():void`
- B. `y(int):void`
- C. `y():void`
- D. `z():int`
- E. `y():int`

MDS

Primeiro semestre 2016/2017

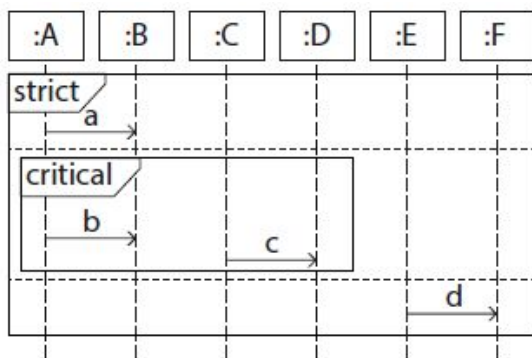
Quiz 4

21/11/2016

(code: 2420)

SOLUTIONS

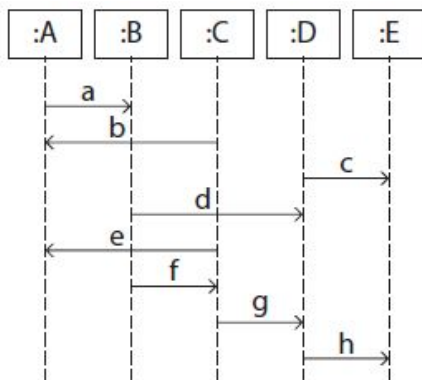
1 - Consider the following Interaction Diagram (Sequence Diagram):



Which of the following message sequences is correct:

- A. $b \rightarrow c \rightarrow a \rightarrow d$
- B. $d \rightarrow a \rightarrow b \rightarrow c$
- C. $a \rightarrow c \rightarrow b \rightarrow d$
- D. $a \rightarrow b \rightarrow d \rightarrow c$
- E. None of the above

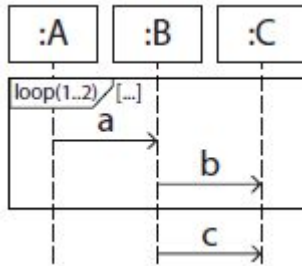
2 - Consider the following Sequence Diagrams:



Which of the following message sequences is incorrect:

- A. $c \rightarrow a \rightarrow d \rightarrow b \rightarrow e \rightarrow f \rightarrow g \rightarrow h$
- B. $a \rightarrow b \rightarrow c \rightarrow e \rightarrow d \rightarrow f \rightarrow g \rightarrow h$
- C. $a \rightarrow b \rightarrow d \rightarrow c \rightarrow e \rightarrow f \rightarrow g \rightarrow h$
- D. $a \rightarrow b \rightarrow c \rightarrow d \rightarrow e \rightarrow f \rightarrow g \rightarrow h$
- E. None of the above

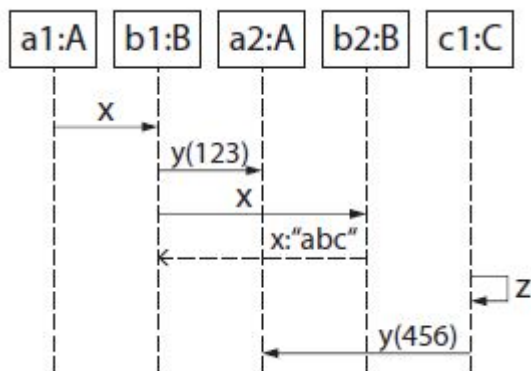
3- Consider the following Interaction Diagram (Sequence Diagram):



Which of the following sequences is correct?

- A. C
- B. $a \rightarrow b \rightarrow a \rightarrow b \rightarrow c$
- C. $a \rightarrow b \rightarrow c \rightarrow a \rightarrow b \rightarrow c$
- D. $a \rightarrow b \rightarrow c \rightarrow a \rightarrow b$
- E. None of the above

4- Consider the following Interaction Diagram (Sequence Diagram):



Which operation does class C have according to the diagram?

- A. $z():void$
- B. $y(int):void$
- C. $y():void$
- D. $z():int$
- E. $y():int$

MDS

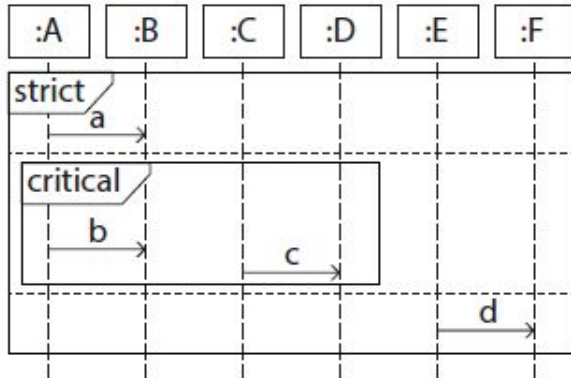
Primeiro semestre 2016/2017

Quiz 4

21/11/2016

(code: 2420)

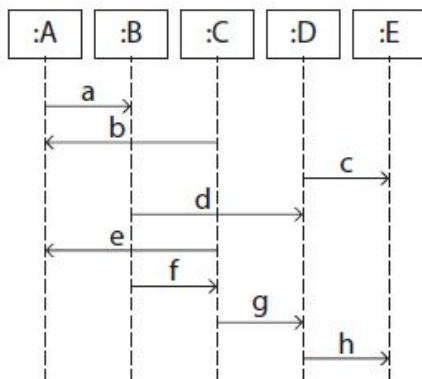
1 - Consider the following Interaction Diagram (Sequence Diagram):



Which of the following message sequences is correct:

- A. $b \rightarrow c \rightarrow a \rightarrow d$
- B. $d \rightarrow a \rightarrow b \rightarrow c$
- C. $a \rightarrow c \rightarrow b \rightarrow d$
- D. $a \rightarrow b \rightarrow d \rightarrow c$
- E. None of the above

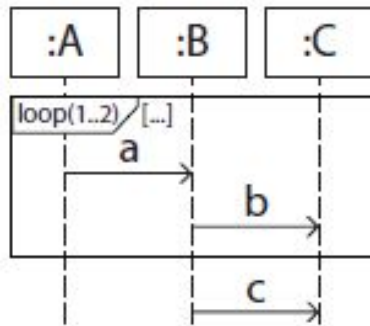
2 - Consider the following Sequence Diagrams:



Which of the following message sequences is incorrect:

- A. $c \rightarrow a \rightarrow d \rightarrow b \rightarrow e \rightarrow f \rightarrow g \rightarrow h$
- B. $a \rightarrow b \rightarrow c \rightarrow e \rightarrow d \rightarrow f \rightarrow g \rightarrow h$
- C. $a \rightarrow b \rightarrow d \rightarrow c \rightarrow e \rightarrow f \rightarrow g \rightarrow h$
- D. $a \rightarrow b \rightarrow c \rightarrow d \rightarrow e \rightarrow f \rightarrow g \rightarrow h$
- E. None of the above

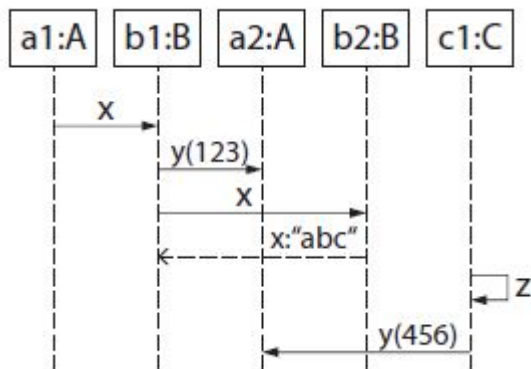
3- Consider the following Interaction Diagram (Sequence Diagram):



Which of the following sequences is correct?

- A. C
- B. $a \rightarrow b \rightarrow a \rightarrow b \rightarrow c$
- C. $a \rightarrow b \rightarrow c \rightarrow a \rightarrow b \rightarrow c$
- D. $a \rightarrow b \rightarrow c \rightarrow a \rightarrow b$
- E. None of the above

4- Consider the following Interaction Diagram (Sequence Diagram):



Which operation does class C have according to the diagram (choose the correct one)?

- A. `z():void`
- B. `y(int):void`
- C. `y():void`
- D. `z():int`
- E. `y():int`

MDS

Primeiro semestre 2016/2017

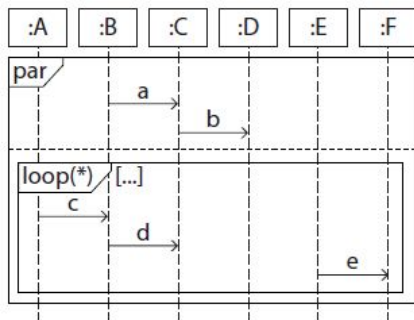
Quiz 4

29/11/2016

(code: 3410)

SOLUTIONS

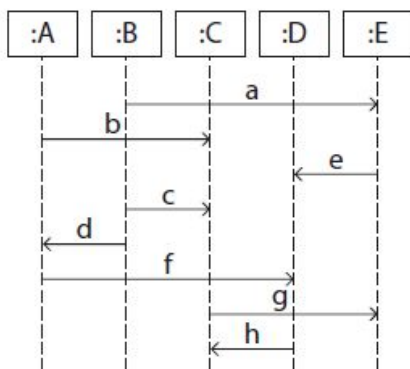
1 - Consider the following Interaction Diagram (Sequence Diagram):



Which of the following message sequences is incorrect:

- A. $c \rightarrow a \rightarrow b \rightarrow d \rightarrow e$
- B. $c \rightarrow d \rightarrow e \rightarrow a \rightarrow b$
- C. $a \rightarrow b \rightarrow c \rightarrow d \rightarrow e \rightarrow a \rightarrow b$
- D. $a \rightarrow c \rightarrow d \rightarrow e \rightarrow b$
- E. $a \rightarrow c \rightarrow d \rightarrow b \rightarrow e$

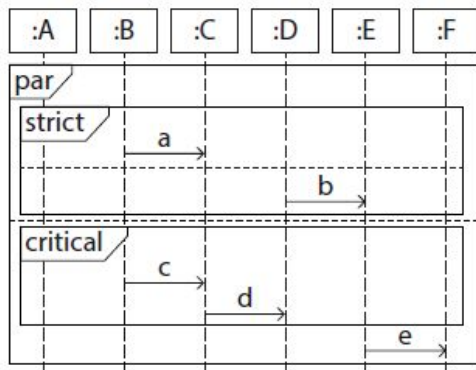
2-



Which of the following message sequences is **incorrect**:

- A. $a \rightarrow b \rightarrow c \rightarrow d \rightarrow e \rightarrow f \rightarrow g \rightarrow h$
- B. $a \rightarrow b \rightarrow e \rightarrow c \rightarrow f \rightarrow d \rightarrow g \rightarrow h$
- C. $a \rightarrow b \rightarrow c \rightarrow e \rightarrow d \rightarrow g \rightarrow f \rightarrow h$
- D. $b \rightarrow a \rightarrow c \rightarrow d \rightarrow e \rightarrow f \rightarrow g \rightarrow h$
- E. None of the above

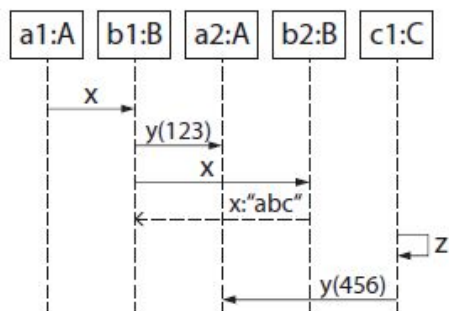
3- consider the following Interaction Diagram (Sequence Diagram):



Which of the following sequences is incorrect?

- A. $a \rightarrow c \rightarrow d \rightarrow b \rightarrow e$
- B. $c \rightarrow a \rightarrow e \rightarrow d \rightarrow b$
- C. $e \rightarrow a \rightarrow b \rightarrow c \rightarrow d$
- D. $c \rightarrow d \rightarrow a \rightarrow e \rightarrow b$
- E. $c \rightarrow d \rightarrow a \rightarrow b \rightarrow e$

4- consider the following Interaction Diagram (Sequence Diagram):



Which operation does class B have according to the diagram?

- A. $x():void$
- B. $x(String):void$
- C. $y():int$
- D. $y(int):void$
- E. $y():void$

MDS

Primeiro semestre 2016/2017

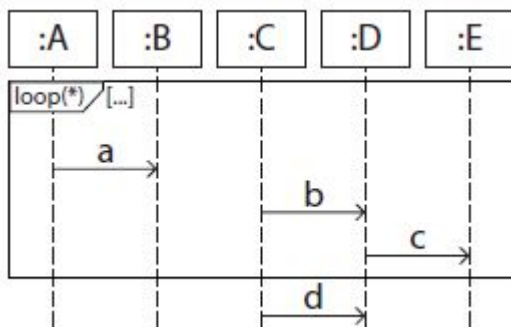
Quiz 4

29/11/2016

(code: 4450)

SOLUTIONS

1 - Consider the following Interaction Diagram (Sequence Diagram):

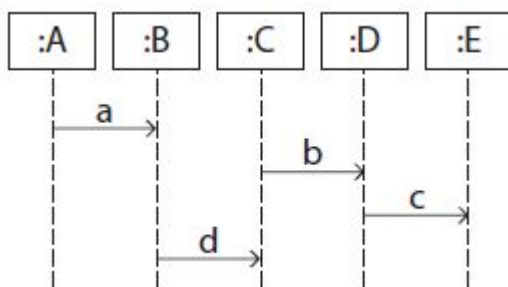


Which of the following message sequences is incorrect:

- A. $a \rightarrow b \rightarrow c \rightarrow b \rightarrow a \rightarrow c \rightarrow d$
- B. $b \rightarrow c \rightarrow a \rightarrow a \rightarrow b \rightarrow c \rightarrow d$
- C. $a \rightarrow b \rightarrow c \rightarrow d$
- D. $b \rightarrow a \rightarrow c \rightarrow d$

E. None of the above

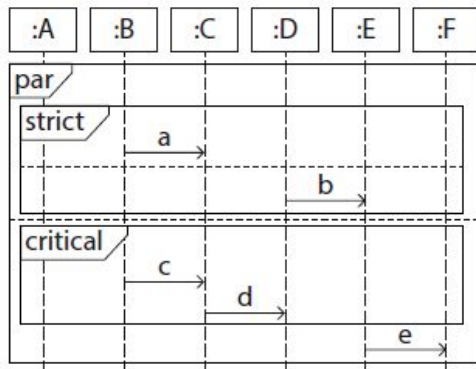
2-



Which of the following message sequences is **incorrect**:

- A. $b \rightarrow a \rightarrow d \rightarrow c$
- B. $b \rightarrow d \rightarrow a \rightarrow c$
- C. $d \rightarrow a \rightarrow b \rightarrow c$
- D. $b \rightarrow c \rightarrow a \rightarrow d$
- E. None of the above

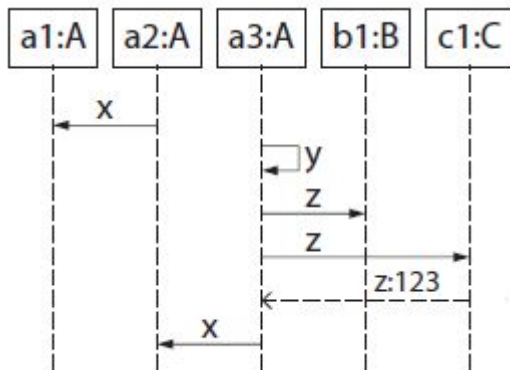
3- consider the following Interaction Diagram (Sequence Diagram):



Which of the following sequences is incorrect?

- A. $c \rightarrow d \rightarrow a \rightarrow e \rightarrow b$
- B. $c \rightarrow d \rightarrow a \rightarrow b \rightarrow e$
- C. $a \rightarrow c \rightarrow d \rightarrow b \rightarrow e$
- D. $c \rightarrow a \rightarrow e \rightarrow d \rightarrow b$**
- E. $e \rightarrow a \rightarrow b \rightarrow c \rightarrow d$

4- consider the following Interaction Diagram (Sequence Diagram):



Which operation does class A have according to the diagram?

- A. $x():\text{int}$
- B. $y():\text{void}$**
- C. $x():\text{String}$
- D. $y(\text{int}):void$
- E. $z():\text{int}$

MDS

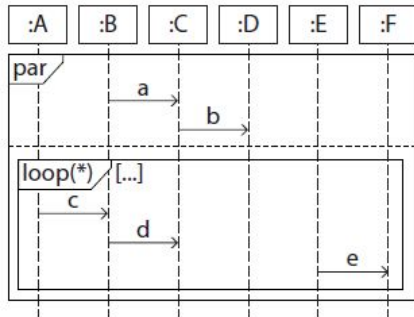
Primeiro semestre 2016/2017

Quiz 4

29/11/2016

(code: 3410)

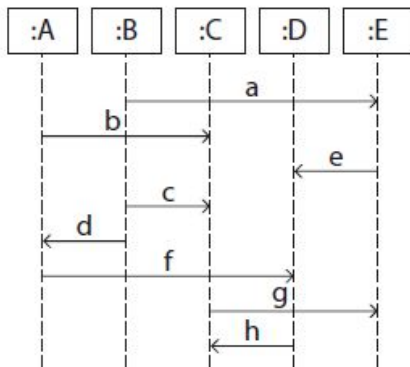
1 - Consider the following Interaction Diagram (Sequence Diagram):



Which of the following message sequences is incorrect:

- A. $c \rightarrow a \rightarrow b \rightarrow d \rightarrow e$
- B. $c \rightarrow d \rightarrow e \rightarrow a \rightarrow b$
- C. $a \rightarrow b \rightarrow c \rightarrow d \rightarrow e \rightarrow a \rightarrow b$
- D. $a \rightarrow c \rightarrow d \rightarrow e \rightarrow b$
- E. $a \rightarrow c \rightarrow d \rightarrow b \rightarrow e$

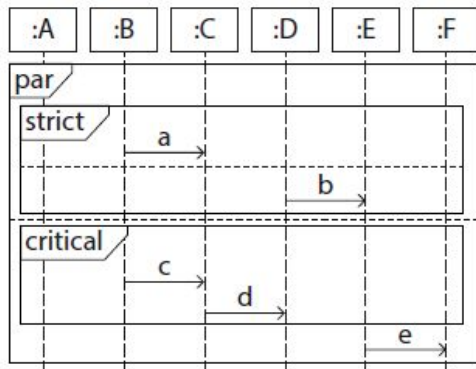
2-



Which of the following message sequences is **incorrect**:

- A. $a \rightarrow b \rightarrow c \rightarrow d \rightarrow e \rightarrow f \rightarrow g \rightarrow h$
- B. $a \rightarrow b \rightarrow e \rightarrow c \rightarrow f \rightarrow d \rightarrow g \rightarrow h$
- C. $a \rightarrow b \rightarrow c \rightarrow e \rightarrow d \rightarrow g \rightarrow f \rightarrow h$
- D. $b \rightarrow a \rightarrow c \rightarrow d \rightarrow e \rightarrow f \rightarrow g \rightarrow h$
- E. None of the above

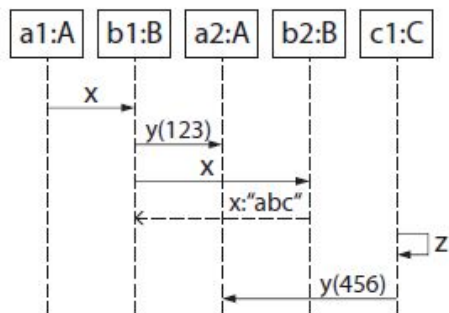
3- consider the following Interaction Diagram (Sequence Diagram):



Which of the following sequences is incorrect?

- A. $a \rightarrow c \rightarrow d \rightarrow b \rightarrow e$
- B. $c \rightarrow a \rightarrow e \rightarrow d \rightarrow b$
- C. $e \rightarrow a \rightarrow b \rightarrow c \rightarrow d$
- D. $c \rightarrow d \rightarrow a \rightarrow e \rightarrow b$
- E. $c \rightarrow d \rightarrow a \rightarrow b \rightarrow e$

4- consider the following Interaction Diagram (Sequence Diagram):



Which operation does class B have according to the diagram?

- A. $x():void$
- B. $x(String):void$
- C. $y():int$
- D. $y(int):void$
- E. $y():void$

MDS

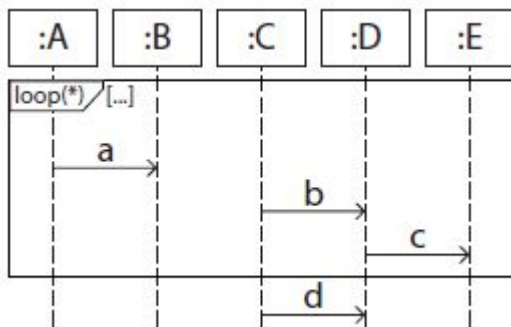
Primeiro semestre 2016/2017

Quiz 4

29/11/2016

(code: 4450)

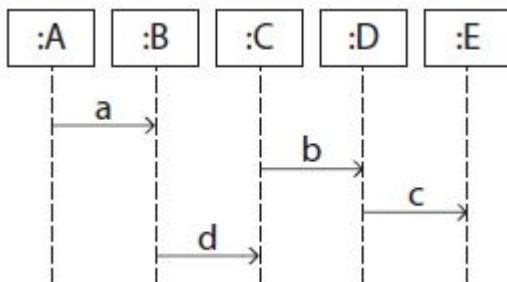
1 - Consider the following Interaction Diagram (Sequence Diagram):



Which of the following message sequences is incorrect:

- A. $a \rightarrow b \rightarrow c \rightarrow b \rightarrow a \rightarrow c \rightarrow d$
- B. $b \rightarrow c \rightarrow a \rightarrow a \rightarrow b \rightarrow c \rightarrow d$
- C. $a \rightarrow b \rightarrow c \rightarrow d$
- D. $b \rightarrow a \rightarrow c \rightarrow d$
- E. None of the above

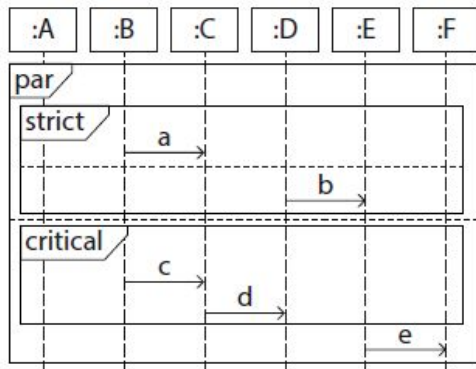
2-



Which of the following message sequences is **incorrect**:

- A. $b \rightarrow a \rightarrow d \rightarrow c$
- B. $b \rightarrow d \rightarrow a \rightarrow c$
- C. $d \rightarrow a \rightarrow b \rightarrow c$
- D. $b \rightarrow c \rightarrow a \rightarrow d$
- E. None of the above

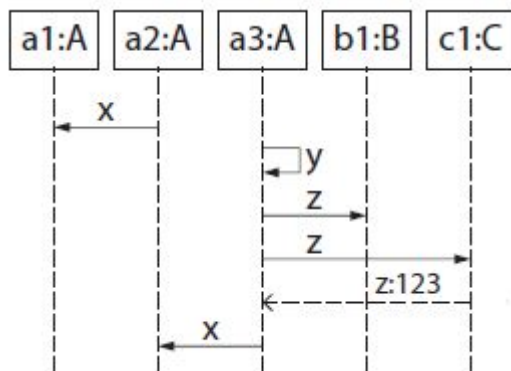
3- consider the following Interaction Diagram (Sequence Diagram):



Which of the following sequences is incorrect?

- A. $c \rightarrow d \rightarrow a \rightarrow e \rightarrow b$
- B. $c \rightarrow d \rightarrow a \rightarrow b \rightarrow e$
- C. $a \rightarrow c \rightarrow d \rightarrow b \rightarrow e$
- D. $c \rightarrow a \rightarrow e \rightarrow d \rightarrow b$
- E. $e \rightarrow a \rightarrow b \rightarrow c \rightarrow d$

4- consider the following Interaction Diagram (Sequence Diagram):



Which operation does class A have according to the diagram?

- A. $x():\text{int}$
- B. $y():\text{void}$
- C. $x():\text{String}$
- D. $y(\text{int}): \text{void}$
- E. $z():\text{int}$

MDS

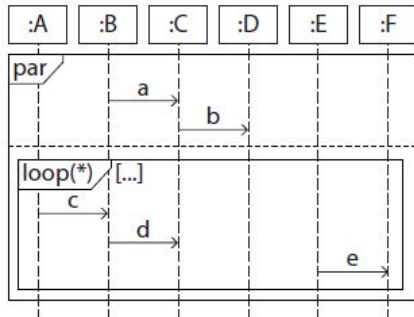
Primeiro semestre 2016/2017

Quiz 4

29/11/2016

(code: 5410)

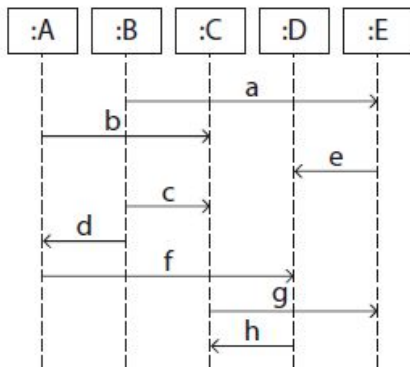
1 - Consider the following Interaction Diagram (Sequence Diagram):



Which of the following message sequences is incorrect:

- A. $c \rightarrow a \rightarrow b \rightarrow d \rightarrow e$
- B. $c \rightarrow d \rightarrow e \rightarrow a \rightarrow b$
- C. $a \rightarrow b \rightarrow c \rightarrow d \rightarrow e \rightarrow a \rightarrow b$
- D. $a \rightarrow c \rightarrow d \rightarrow e \rightarrow b$
- E. $a \rightarrow c \rightarrow d \rightarrow b \rightarrow e$

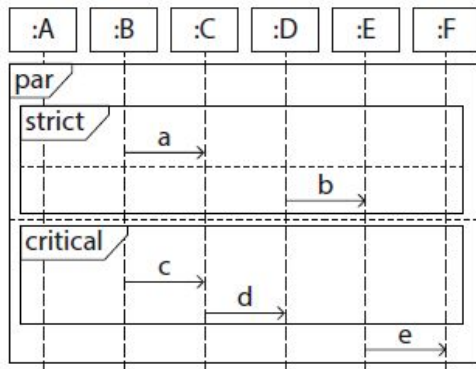
2-



Which of the following message sequences is **incorrect**:

- A. $a \rightarrow b \rightarrow c \rightarrow d \rightarrow e \rightarrow f \rightarrow g \rightarrow h$
- B. $a \rightarrow b \rightarrow e \rightarrow c \rightarrow f \rightarrow d \rightarrow g \rightarrow h$
- C. $a \rightarrow b \rightarrow c \rightarrow e \rightarrow d \rightarrow g \rightarrow f \rightarrow h$
- D. $b \rightarrow a \rightarrow c \rightarrow d \rightarrow e \rightarrow f \rightarrow g \rightarrow h$
- E. None of the above

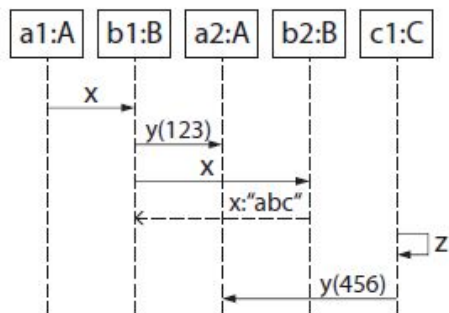
3- consider the following Interaction Diagram (Sequence Diagram):



Which of the following sequences is incorrect?

- A. $a \rightarrow c \rightarrow d \rightarrow b \rightarrow e$
- B. $c \rightarrow a \rightarrow e \rightarrow d \rightarrow b$
- C. $e \rightarrow a \rightarrow b \rightarrow c \rightarrow d$
- D. $c \rightarrow d \rightarrow a \rightarrow e \rightarrow b$
- E. $c \rightarrow d \rightarrow a \rightarrow b \rightarrow e$

4- consider the following Interaction Diagram (Sequence Diagram):



Which operation does class B have according to the diagram?

- A. $x():void$
- B. $x(String):void$
- C. $y():int$
- D. $y(int):void$
- E. $y():void$

MDS

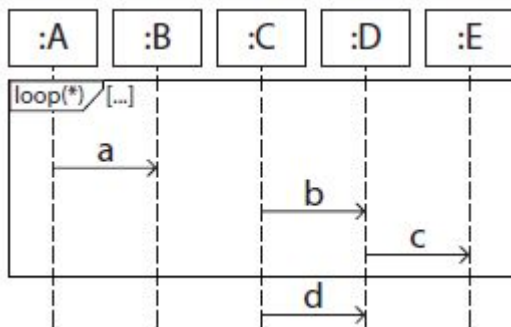
Primeiro semestre 2016/2017

Quiz 4

29/11/2016

(code: 6460)

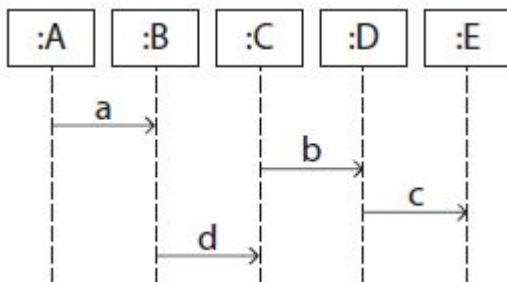
1 - Consider the following Interaction Diagram (Sequence Diagram):



Which of the following message sequences is incorrect:

- A. $a \rightarrow b \rightarrow c \rightarrow b \rightarrow a \rightarrow c \rightarrow d$
- B. $b \rightarrow c \rightarrow a \rightarrow a \rightarrow b \rightarrow c \rightarrow d$
- C. $a \rightarrow b \rightarrow c \rightarrow d$
- D. $b \rightarrow a \rightarrow c \rightarrow d$
- E. None of the above

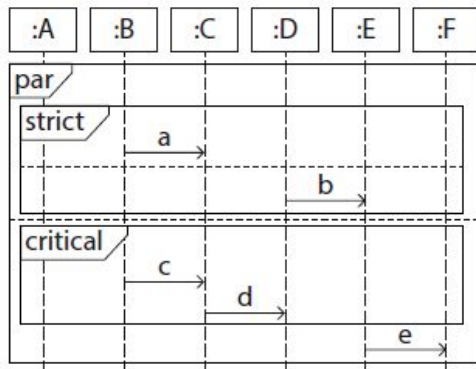
2-



Which of the following message sequences is **incorrect**:

- A. $b \rightarrow a \rightarrow d \rightarrow c$
- B. $a \rightarrow b \rightarrow d \rightarrow c$
- C. $d \rightarrow a \rightarrow b \rightarrow c$
- D. $b \rightarrow c \rightarrow a \rightarrow d$
- E. None of the above

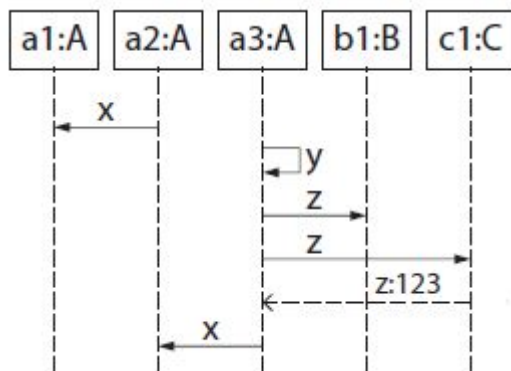
3- consider the following Interaction Diagram (Sequence Diagram):



Which of the following sequences is incorrect?

- A. $c \rightarrow d \rightarrow a \rightarrow e \rightarrow b$
- B. $c \rightarrow d \rightarrow a \rightarrow b \rightarrow e$
- C. $a \rightarrow c \rightarrow d \rightarrow b \rightarrow e$
- D. $c \rightarrow a \rightarrow e \rightarrow d \rightarrow b$
- E. $e \rightarrow a \rightarrow b \rightarrow c \rightarrow d$

4- consider the following Interaction Diagram (Sequence Diagram):



Which operation does class A have according to the diagram?

- A. $x():\text{int}$
- B. $y():\text{void}$
- C. $x():\text{String}$
- D. $y(\text{int}):void$
- E. $z():\text{int}$