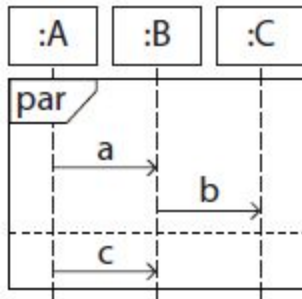


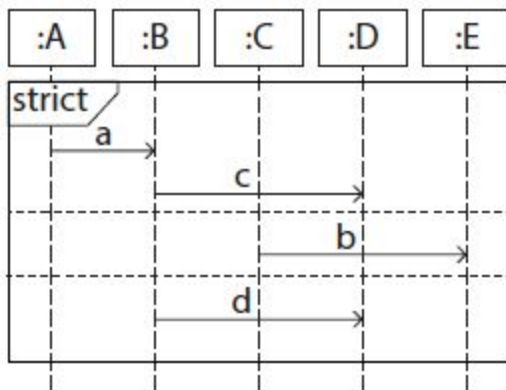
Lab 7 – Sequence Diagrams

1. You are given the following sequence diagram. Which of the following traces are possible?



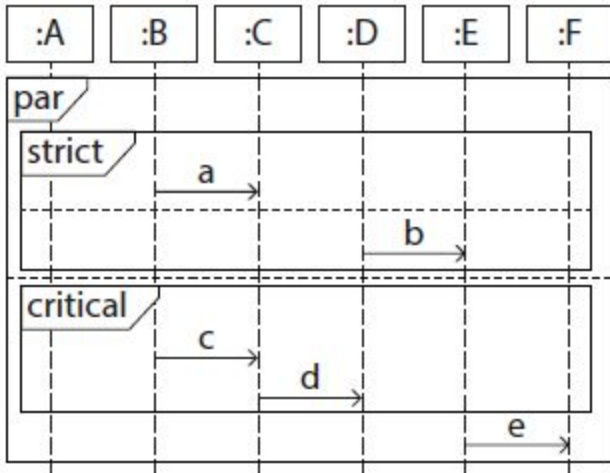
- a) $c \rightarrow a \rightarrow b$
- b) $c \rightarrow b \rightarrow a$
- c) $a \rightarrow b \rightarrow c$
- d) $b \rightarrow a \rightarrow c$
- e) $a \rightarrow c \rightarrow b$
- f) $b \rightarrow c \rightarrow a$

2. You are given the following sequence diagram. Which of the following traces are possible?



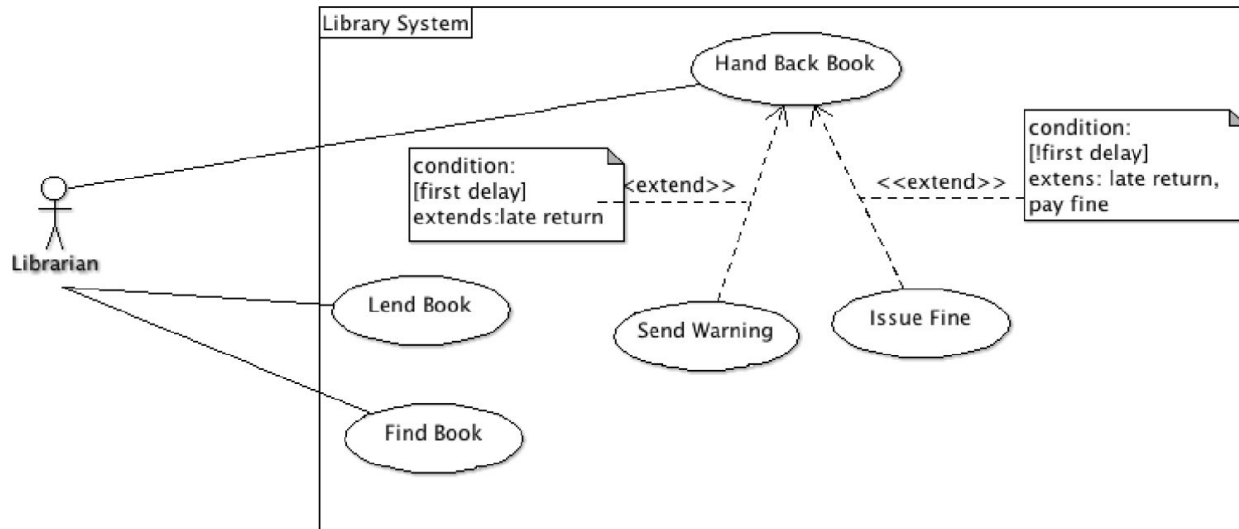
- a. $a \rightarrow c \rightarrow b \rightarrow d$
- b. $a \rightarrow b \rightarrow d \rightarrow c$
- c. $a \rightarrow b \rightarrow c \rightarrow d$
- d. $b \rightarrow d \rightarrow a \rightarrow c$

3. You are given the following sequence diagram. Which of the following traces are possible?



- a) $a \rightarrow b \rightarrow c \rightarrow e \rightarrow d$
- b) $c \rightarrow d \rightarrow a \rightarrow b \rightarrow e$
- c) $a \rightarrow c \rightarrow d \rightarrow b \rightarrow e$
- d) $e \rightarrow a \rightarrow b \rightarrow c \rightarrow d$
- e) $c \rightarrow a \rightarrow e \rightarrow d \rightarrow b$
- f) $a \rightarrow b \rightarrow e \rightarrow d \rightarrow c$

4. Consider the following Use Case Diagram of a Library system:



Consider the corresponding specification to the “Hand Back Book” Use Case:

| |
|---|
| Use Case: Hand Back Book |
| Description: the Librarian returns a lent book |
| Main Actor: Librarian |
| Secondary Actor: None |
| Pre-condition: The librarian is logged in the System |
| Main Flow: 1. The Use Case starts when the librarian selects an option to return book. 2. The Librarian introduces the Borrower’s ID. 3. The System shows the Borrower’s data details, including all the borrowed books. 4. For each book to be returned a) The Librarian finds the book to be returned in the borrowed books list. Extension point: late return, pay fine b) The Librarian tags the book as returned. |
| 5. The Use Case Ends. |
| Post-condition: The book was returned. |
| Alternative Flow: Borrower’s Id does not match the Library user’s list The book is not in the list. |

Consider the corresponding specification to the “Hand Back Book” Use Case:

| |
|--|
| Use Case: Hand Back Book: Borrower’s ID does not match the Library user’s list |
| Description: the User with the Borrower’s ID does not match in the system’s list of |
| Library users |
| Main Actor: Librarian |
| Secondary Actor: None |
| Pre-condition: The entered Borrower’s ID is invalid |
| Main Flow: 1. The alternative Flow starts before step 3. 2. The System shows message saying that the borrower’s ID is invalid. 3. Return to step 2 of the main Scenario. |
| Post-condition: none |

| |
|---|
| Use Case: Hand Back Book: The book is not in the list. |
| Description: the User has a book that is not in his list of borrowed books. |
| Main Actor: Librarian |
| Secondary Actor: None |
| Pre-condition: The book is not in the list of borrowed books |
| Main Flow: 1. The alternative Flow starts before step 4- b). 2. The System shows message saying that the book is not in the system. 3. Return to step 4 of the main Scenario. |
| Post-condition: none |

| |
|--|
| Use Case: Issue Fine |
| Description: |
| Segment 1: the Librarian registers and issues the fine |
| Segment 2: the Librarian accepts the payment of the fine |
| Main Actor: Librarian |
| Secondary Actor: None |
| Pre-condition of Segment 1: late return |
| Main Flow in Segment 1: |
| <ol style="list-style-type: none"> 1. The Librarian introduces the details regarding the fine (Borrower's ID and amount due). 2. The System prints the fine. 3. The Use Case Ends. |
| Post-condition of Segment 1: The fine is registered in the System and the system issued the fine. |
| Pre-condition of Segment 2: There is a fine to be paid |
| Main Flow in Segment 2: |
| <ol style="list-style-type: none"> 1. In parallel: <ol style="list-style-type: none"> 1.1. The Librarian accepts the payment. 1.2. The Librarian introduces the data about the fine to be paid (borrower's ID and amount to be paid). 2. The System prints the receipt for the paid amount. |
| Post-condition of Segment 2: |
| <ol style="list-style-type: none"> 1. The fine was registered in the System as being paid. 2. The System has printed the receipt for the corresponding fine. |

| |
|---|
| Use Case: Send Warning |
| Description: |
| Segment 1: the Librarian sends a warning |
| Main Actor: Librarian |
| Secondary Actor: None |
| Pre-condition of Segment 1 : It is a late book return |
| Main Flow: |
| <ol style="list-style-type: none"> 1. The Librarian sends a warning to the user. 2. The system increments the warning count. 3. The use case ends. |
| Post-condition: The book was returned. |
| Alternative Flow: None |

Represent the corresponding Sequence Diagrams to the Use Cases detailed before. Do this in a stepwise manner.

